

Disclosures

- *Speaking fees*: Gilead, AlfaSigma, AbbVie, MSD
- *Consulting*: Gilead, AbbVie

Periodo Gennaio 2020 - giugno 2021

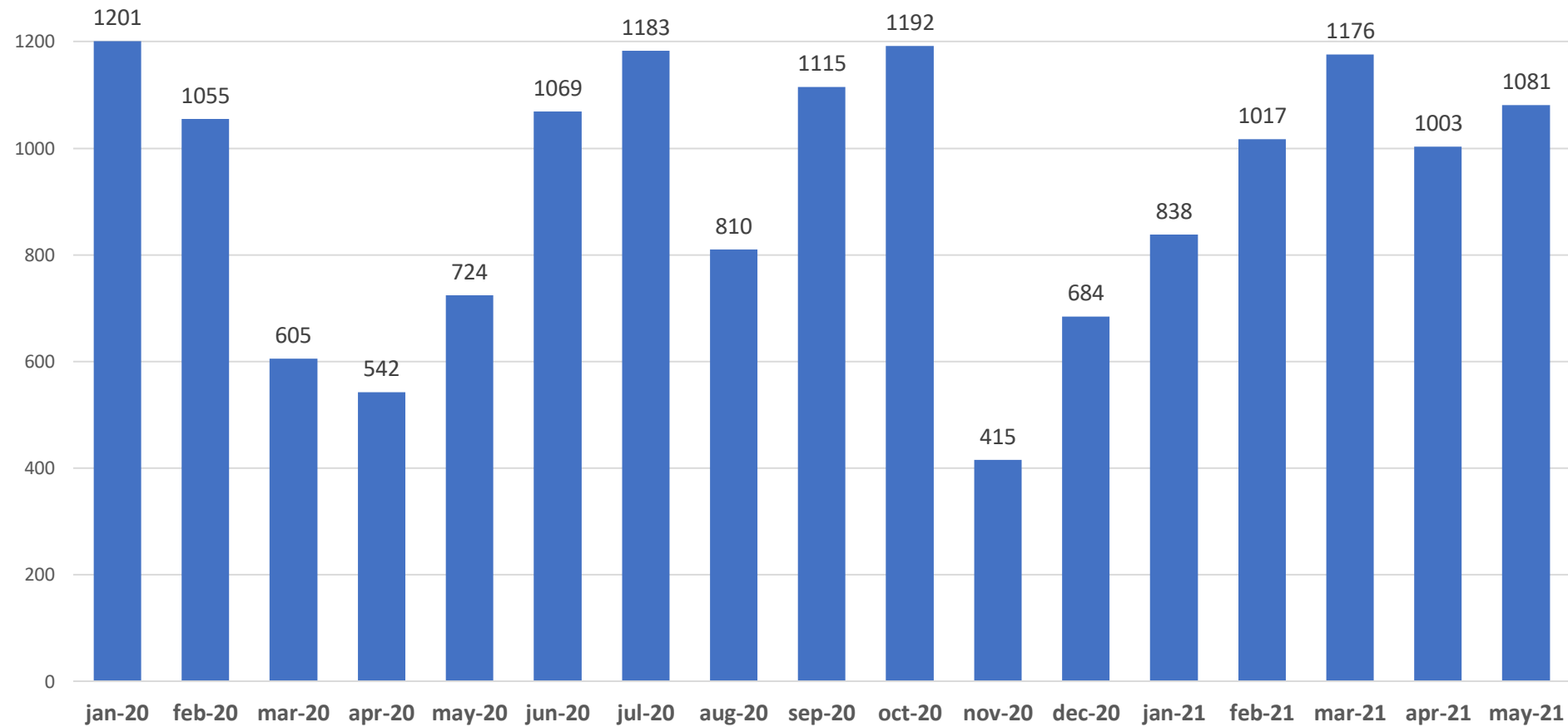


Total Test
15724

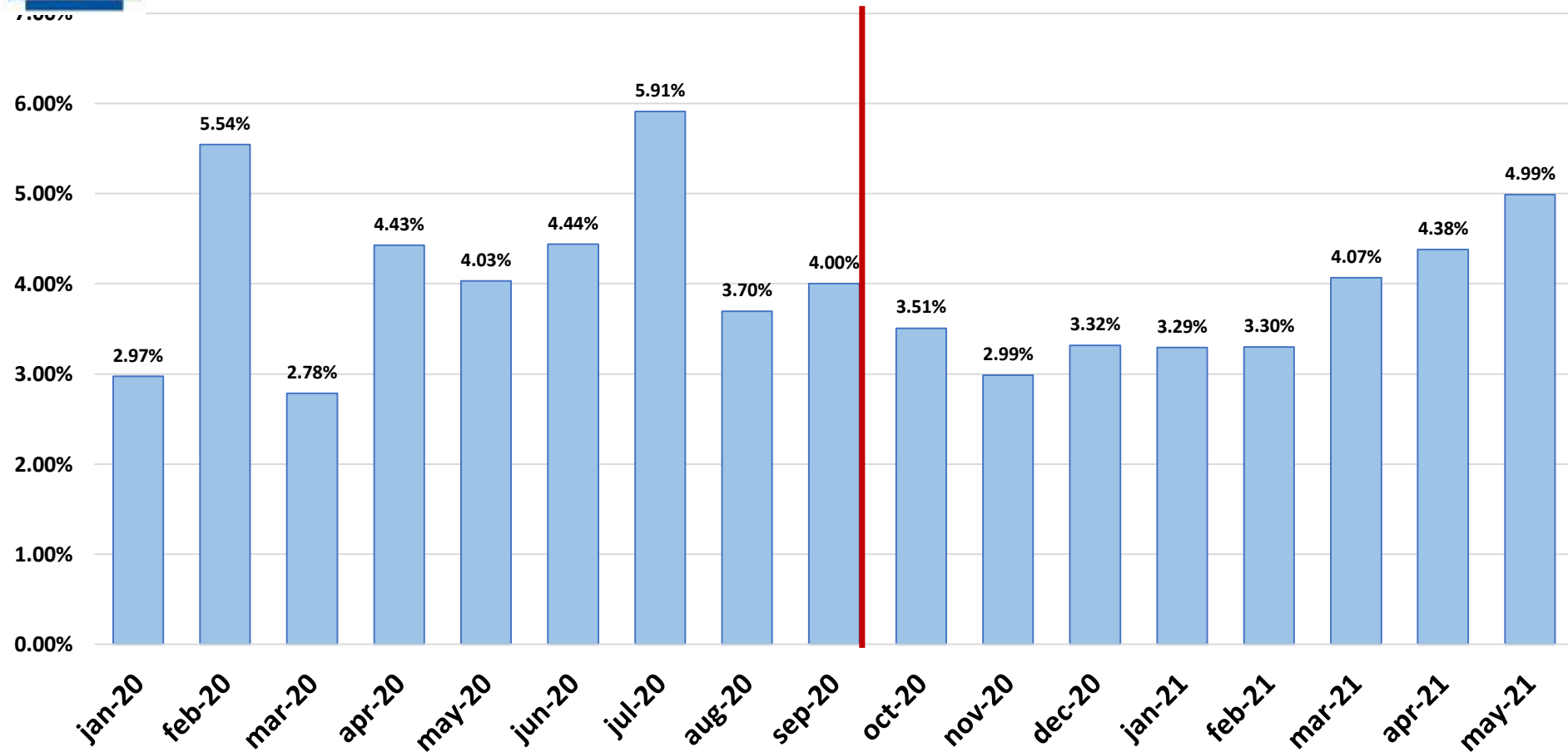
HCV Ab +
510 (3,24%)

Analisi sul
totale dei pazienti

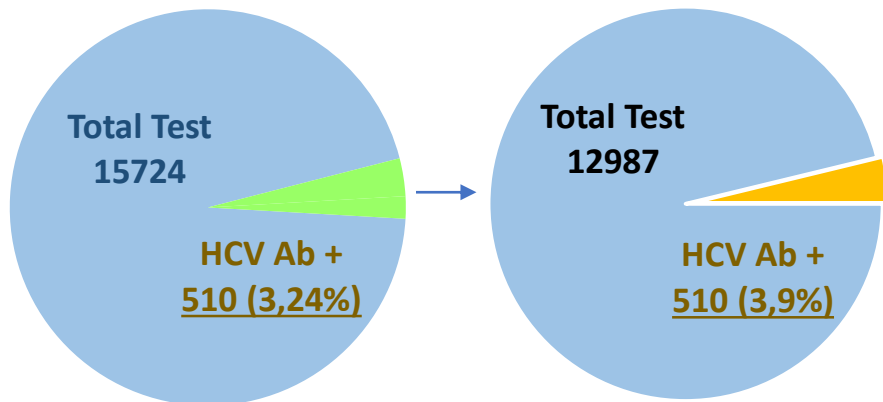
Test effettuati da gennaio 2020 a maggio 2021



Prevalence of HCV ab + matched by admission date



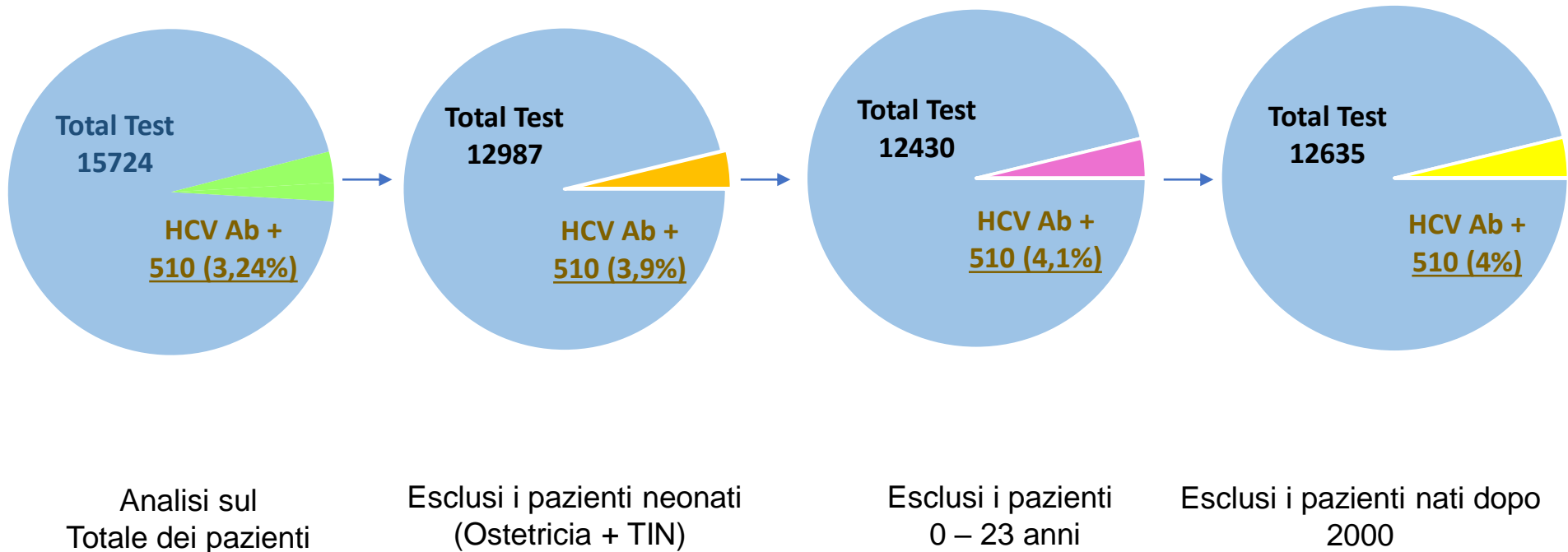
Periodo Gennaio 2020 - giugno 2021



Analisi sul
totale dei pazienti

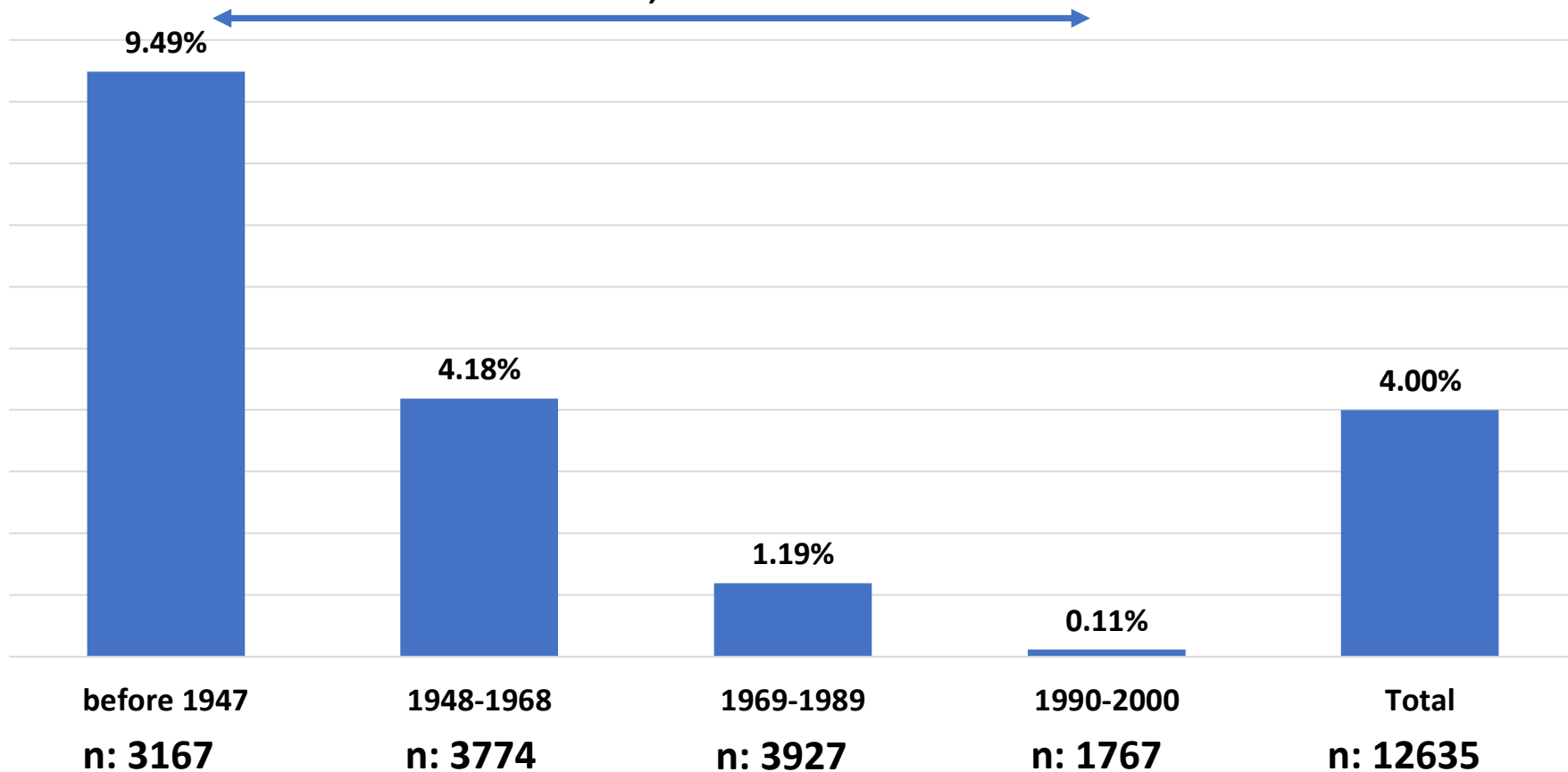
Esclusi i pazienti neonati
(Ostetricia + TIN)

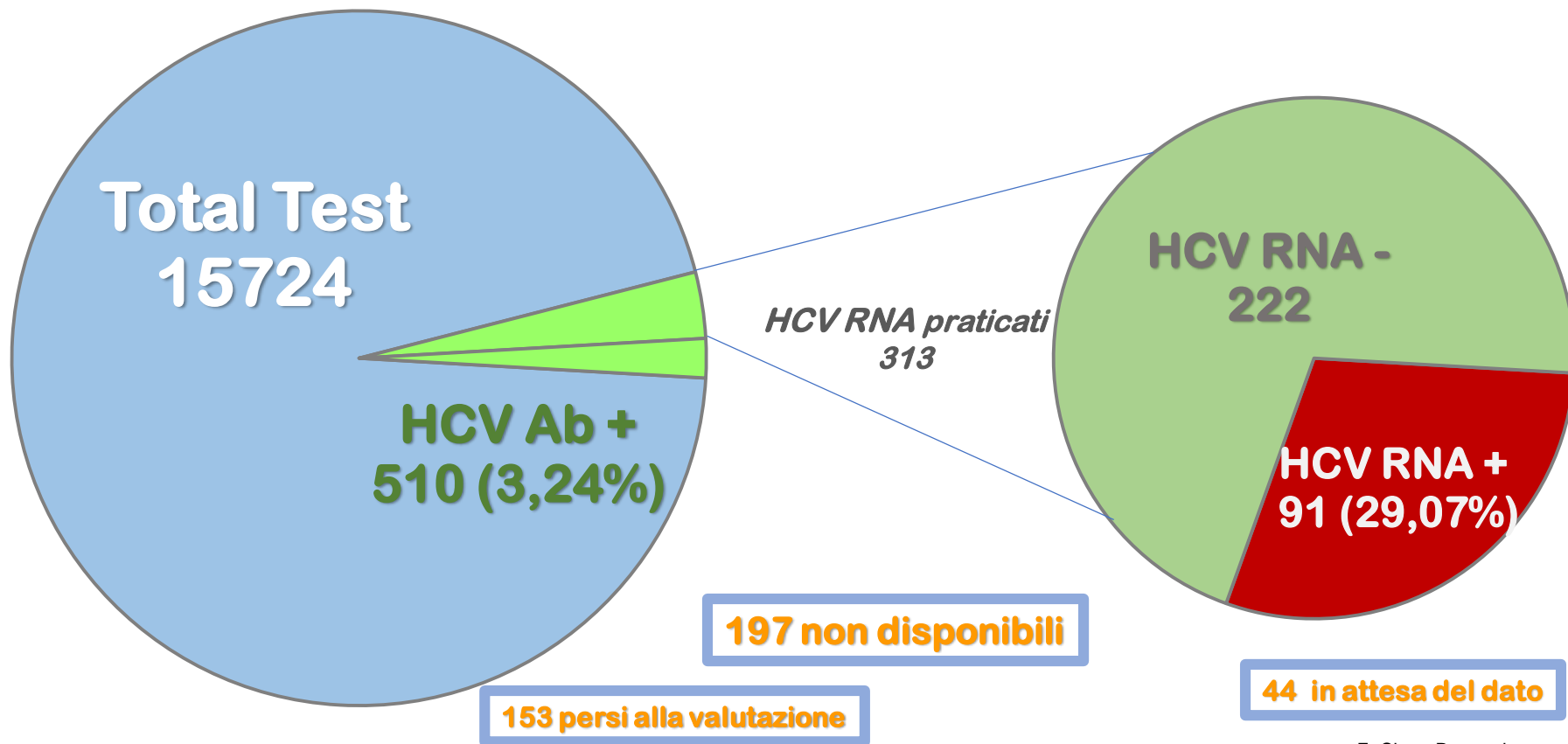
Periodo Gennaio 2020 - giugno 2021



HCV ab prevalence matched by age of birth

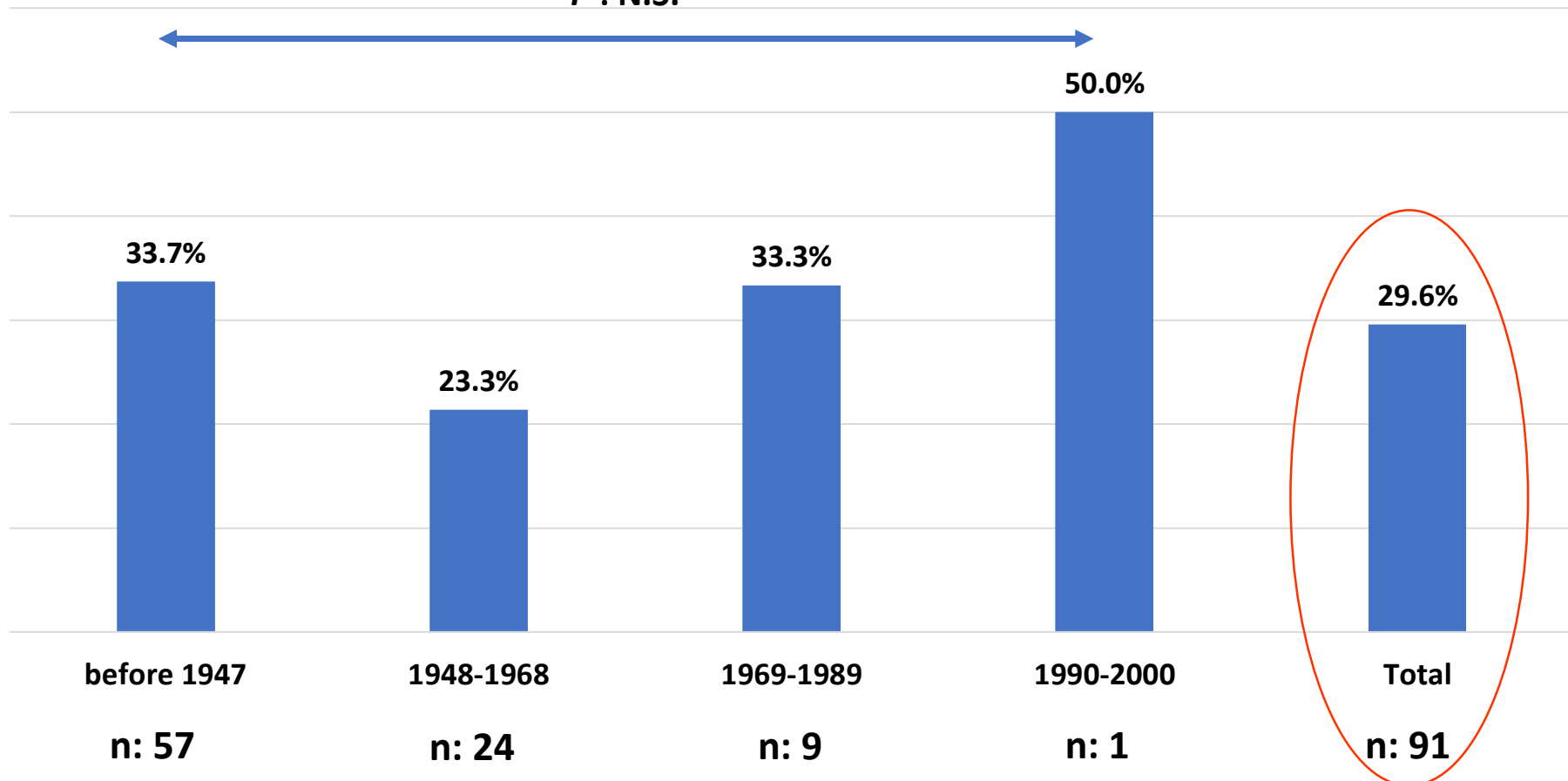
$P < 0,001$





HCV RNA prevalence on HCV ab matched by age of birth

P : N.S.





HCV Ab prevalence matched by Hospital Units

